



RC Garnett Demonstration School Eight Classroom Expansion

October 19, 2016

Welcome and Introductions

Team

- ◀ Cathy Anderson - Principal
- ◀ Adam Woelders - Vice Principal
- ◀ Tristan Schaufler - Director of Facilities
- ◀ Karen Wagner - Project Manager
- ◀ Brian Iseli - Assistant Secretary Treasurer
- ◀ Mal Gill - Assistant Superintendent

Enrolment History and Projections

❖ 2006 - RCG Opened

- Opened with 192 students
- Last year (2012) as a K-7 to 565
- Current numbers 454

❖ Enrolment projections for the next few years:

- 450 - 500 students
- Grandfathering of students has reduced projections for RCG

Expansion Request History

- ❖ The 11th recommendation in the Board's 2012 Long Term Facilities Plan
- ❖ Actual Recommendation: *Plan for an addition to R.C. Garnett in the Five Year Capital Plan.*
- ❖ Was a high priority in the District's Five-year Capital Plan since then
- ❖ Recent discussions with MOE based on enrolment projections led to September 16, 2016 announcement
- ❖ RCG PAC Small Group Meeting September 26, 2016
- ❖ RCG Expansion Plan - October 19, 2016

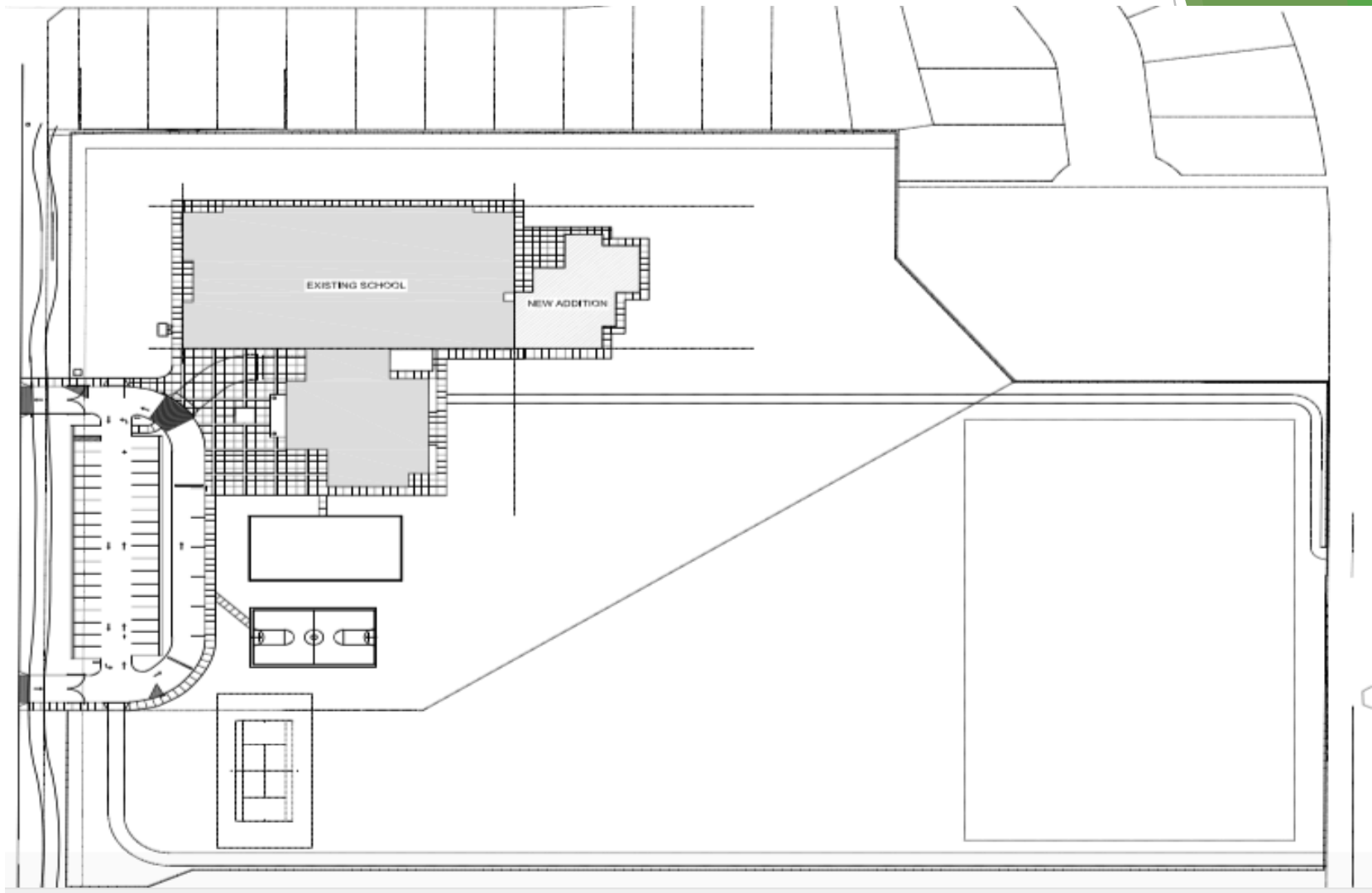
Design Guiding Principles

- ◀ District Core Values:
 - Integrity, Excellence, Courage and Community
- ◀ Least Disruption to Students
- ◀ Save the Playground!!
- ◀ Quick Completion
- ◀ Project Funding Focused on the Expansion

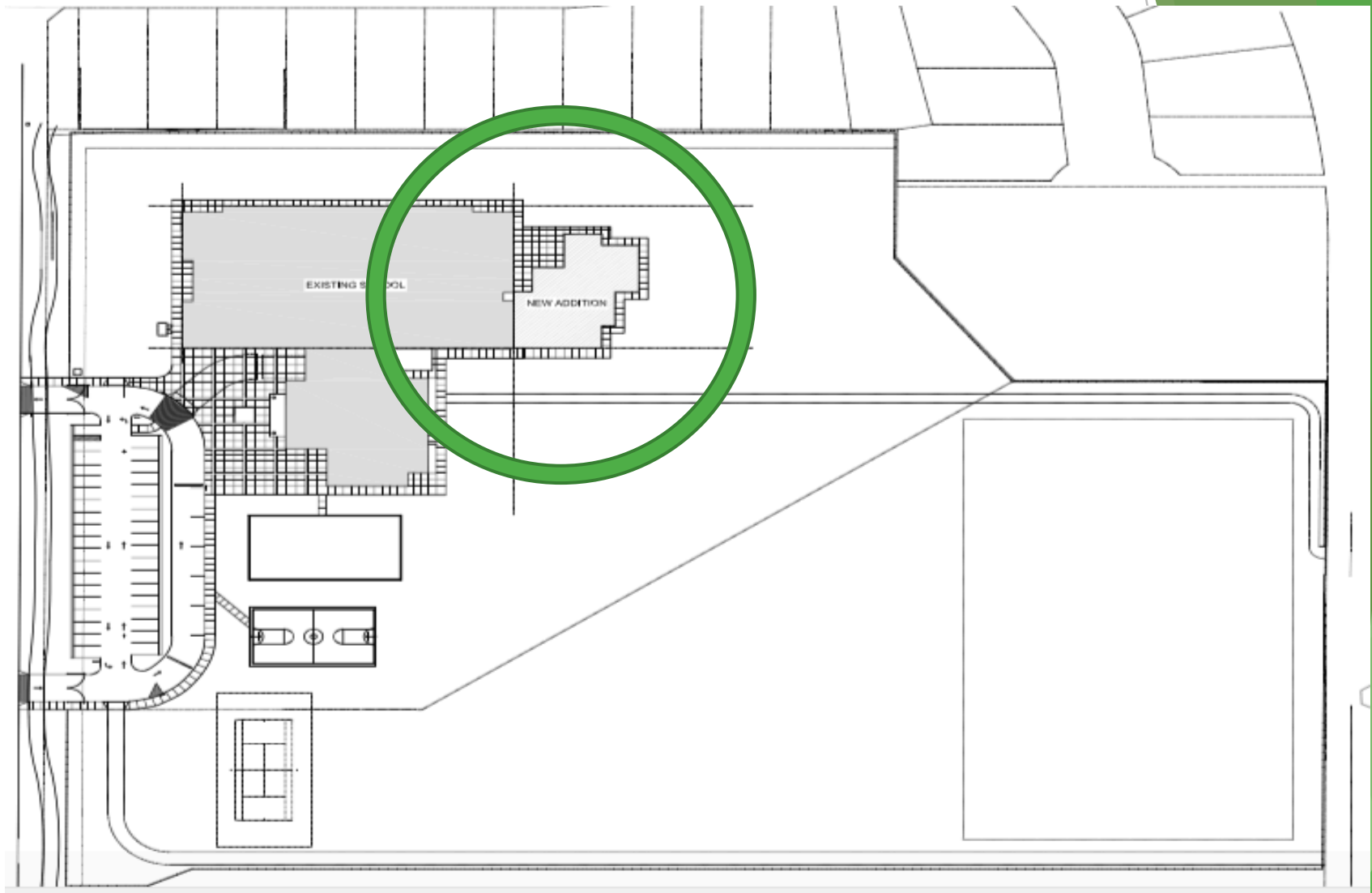
Building Design

- Architect: Iredale Architecture (<http://iredale.ca/>)
- Eight room expansion
- Two floors
- Total number of seats by Ministry Standards at RCG before Expansion:
 - 40 K's
 - 275 regular classroom seats
- Total number of seats by Ministry Standards at RCG after Expansion:
 - 60 K's
 - 450 regular classroom seats

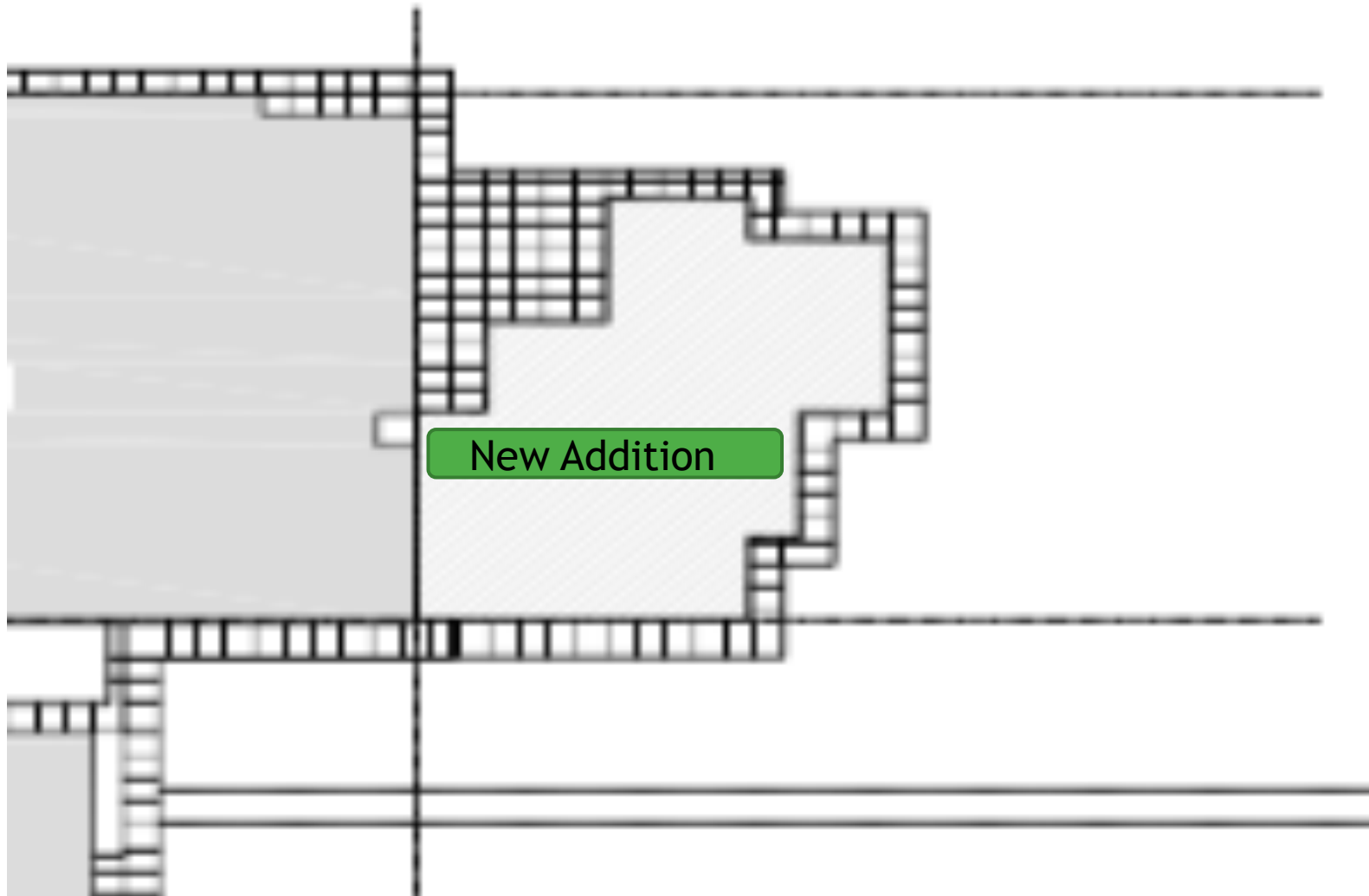
The Expansion



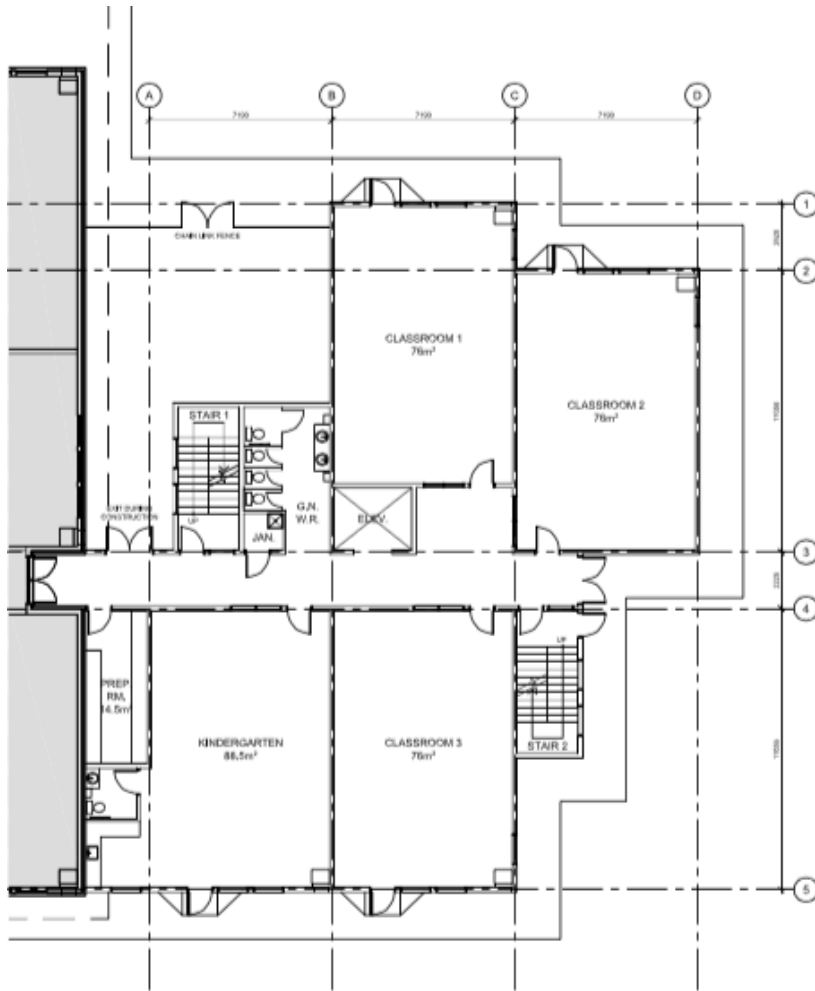
The Expansion



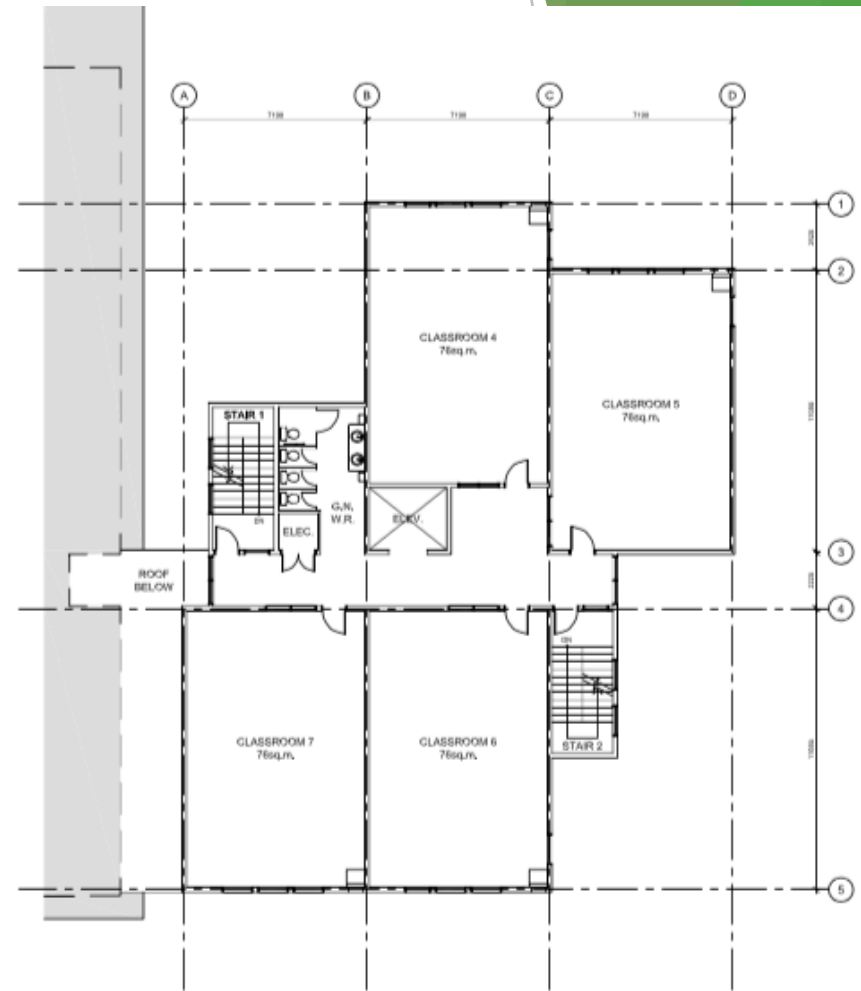
Overview of Expansion



Floor Plans

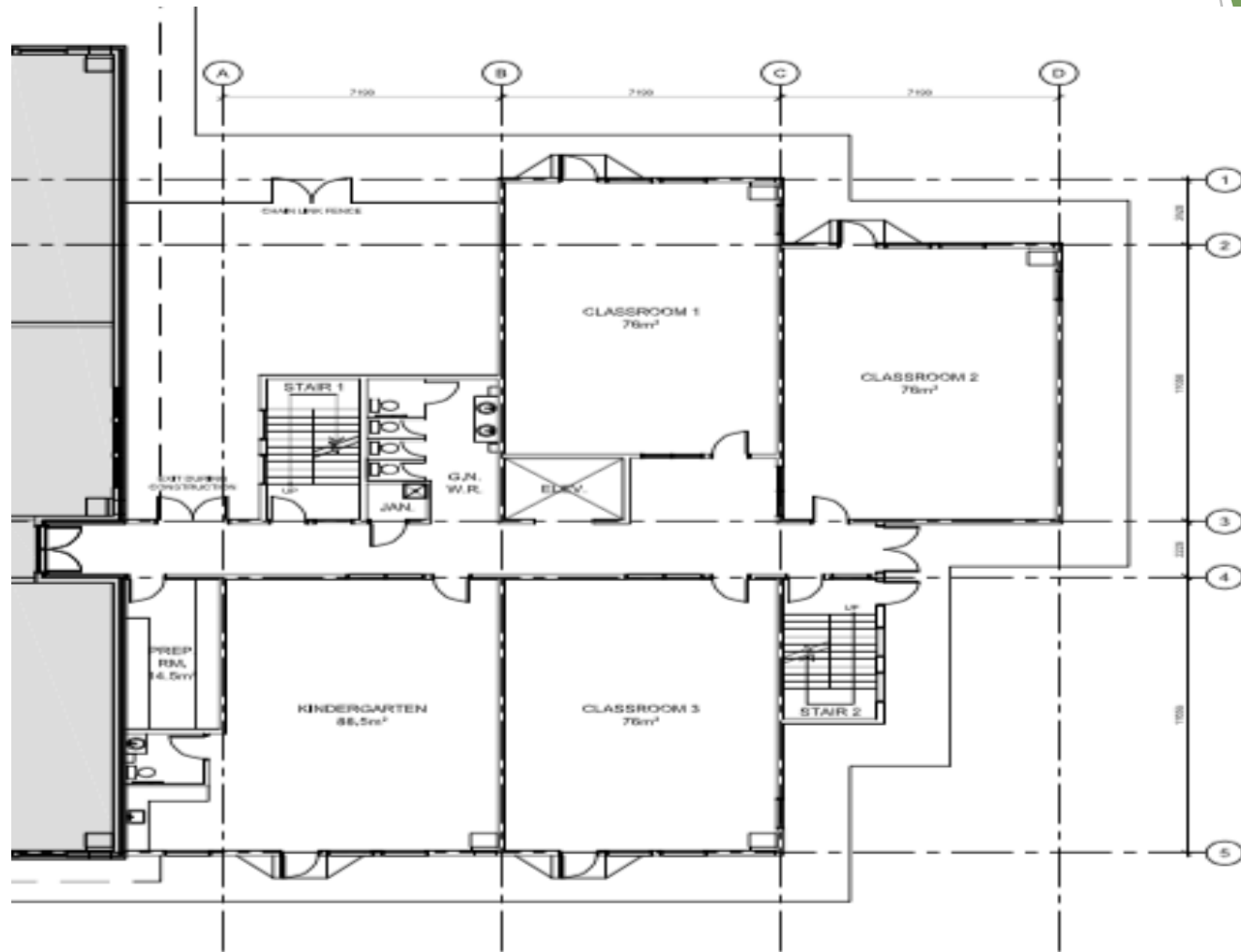


MAIN FLOOR PLAN



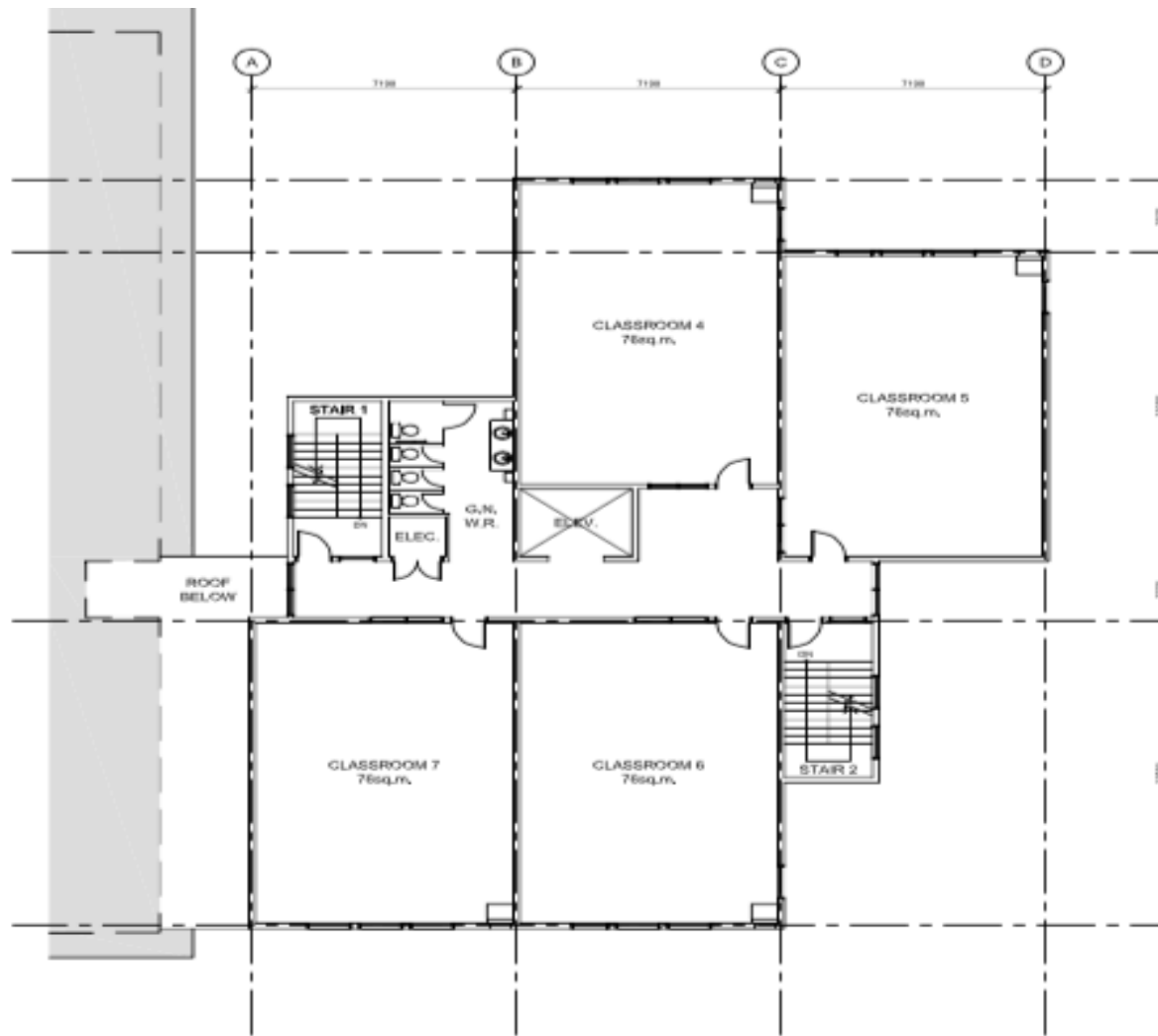
LEVEL 2 PLAN

First Floor Plan



MAIN FLOOR PLAN

Second Floor Plan



LEVEL 2 PLAN

Possible Portable Locations

1. Field
2. Hockey Box
3. Baseball Diamond
4. Double Stack Portables
5. Church Parking lot
6. Reconfiguration of Current Portables
7. Student Pick-up and Drop-off
8. School Parking Lot

Relocation of Portables

- ◀ Four portables on the south parking lot
- ◀ Creation of additional parking on Township of Langley (ToL) land
 - Grass area in front of lacrosse box
- ◀ Remainder of portables moved off grounds
- ◀ Additional washroom facilities with portables (self contained)

Daycare

- ◀ Move into the school multi-purpose room
- ◀ Relocation of the portable pre-school/daycare to the back of the school by the new addition
 - Location (TBA)
 - Scheduled move - early 2018

Project Timeline

- Portables moves scheduled November - February
- Breaking Ground
 - February - March 2017
- Expansion Completion
 - November 2017
- Daycare / Pre-school portable move
 - Early 2018
- Removal of Portables (front of school)

Questions



Thank You

Students

PAC and the RCG Community

RCG Admin Team

Cathy Anderson and Adam Woelders

Tristan Schaufler

Karen Wagner

Brian Iseli