

# Willoughby Slope Catchments Long Term Facilities Plan

School District #35  
Board of Education Regular Meeting  
February 23, 2016



# *Overview*

- The School Act
- Timeline Review
- Background information
- Draft catchments
  - Current catchments
  - Process to date
  - Potential catchments
  - Recommendation
- Consultation process

# *The School Act*

## School Act

- 75.1 (1) A board must establish for each school in its school district, except for a Provincial Resource Program, a catchment area consisting of a geographical area around the school that includes all or part of the school district.
- (2) A board may amend the catchment area established for a school under subsection (1).

# Timeline Review



# *Timeline Review*

- Draft Catchment Revisions
  - 2015-2016 and 2016-2017
    - No changes to catchment configurations
  - 2017 and beyond
    - Proposed catchment changes go into effect
      - Elementary schools

# *Timeline Review*

- Community Consultation
  - October 2015
    - Initial community consultation
  - November 2015 - January 2016
    - Committee Work
  - February 2016
    - Draft Catchments to the Board
  - March - April 2016
    - Community Consultation
  - June 2016
    - New School Catchments approved by the Board of Education

# *Timeline Review*

- **Approved Board Motions (June 16, 2015)**
  - "That the Board of Education approves that staff work with the community, schools and the Township of Langley to maintain the current configuration of schools (K-5, 6-8, 9-12) on the Willoughby Slope."
  - "That the Board of Education requests that staff begin the process, as outlined in the "Willoughby Slope Spring 2015 consultation" report, of re-drawing school catchment boundaries on the Willoughby slope for the 2017/2018 school year."

# Background Information





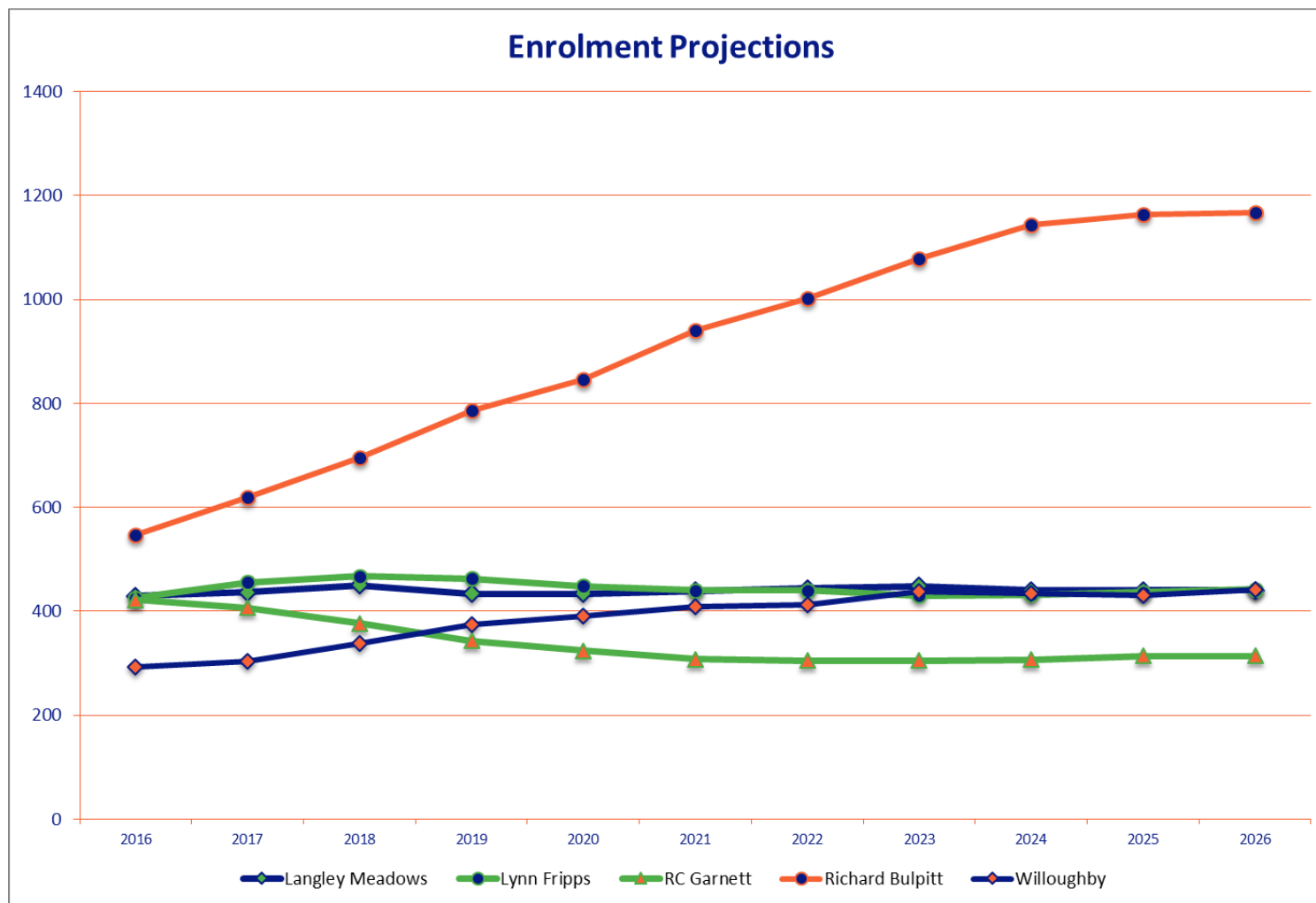
# ***Background Information***

- Projections
- School Capacities
- Projected Classroom Requirements
  - September 2016

# Projections



# *Elementary Projected Enrolment* *2016-2026*



# School Capacities



# Elementary Schools Approximate Capacities

	Classrooms	Portables	Classrooms only	Classrooms and portables
Langley Meadows	19	3	456	528
Lynn Fripps	21		504	504
Richard Bulpitt	21		504	504
RC Garnett	13	9	312	528
Willoughby	15	6	360	504
	<b>89</b>	<b>18</b>	<b>2,136</b>	<b>2,568</b>

Based on Primary capacity of 24 per class

# Projected Requirements



# *Projected\* Requirements for September 2016*

	Classrooms	Portables	Total Space Available	Projected Divisions	Available (Shortfall)
Langley Meadows	19	3	22	18	4
Lynn Fripps	21		21	18	3
Richard Bulpitt	21		21	23	(2)
RC Garnett	13	9	22	17	5
Willoughby	15	6	21	12	9
	<b>89</b>	<b>18</b>	<b>107</b>	<b>88</b>	<b>19</b>

## ***Yorkson Creek and R.E. Mountain***

- PowerPoint in Appendix 2
  - From February 9, 2016 Finance and Facilities meeting
- Next two slides provide a summary



# ***Yorkson Creek Middle School***

- **Currently**
  - Has 3 portables
  - Using 2 portables
- **Next year**
  - Requires 3 additional classroom spaces
  - Will use the final portable
  - Will use other spaces within the school
- **Following year(s)**
  - Additional portables required
  - Will engage the Township of Langley regarding use of land

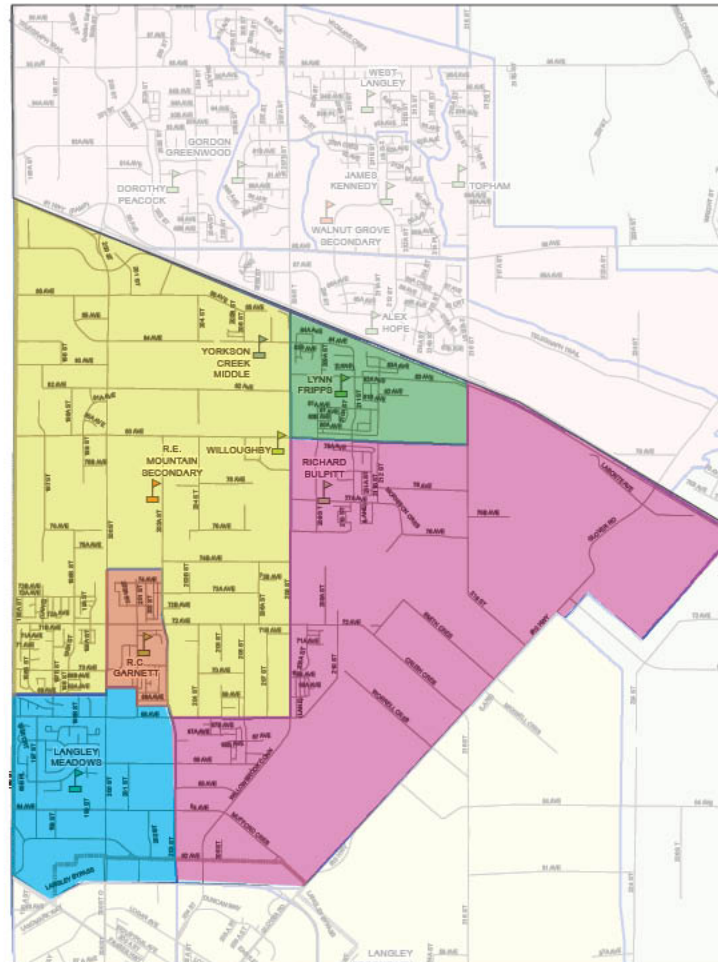
## ***R.E. Mountain***

- Currently has 16 portables
- Next year no additional portables are required
- The following year
  - Additional portables required
  - Will work with the Township of Langley regarding use of space
    - Langley Events Centre for example

# Draft Catchments

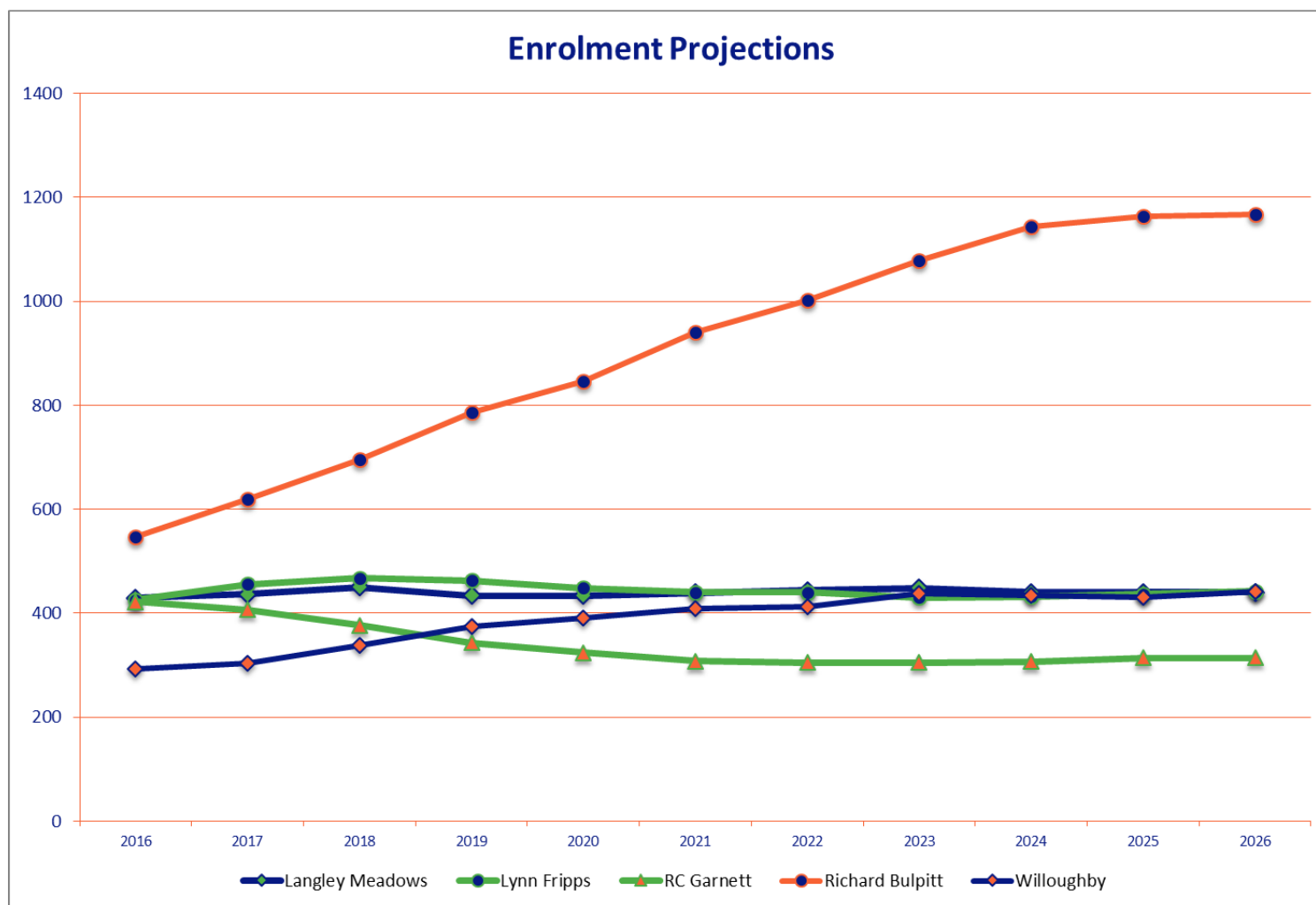


# Map of Current Catchments *(Appendix 4)*



Langley Meadows (456 – 528)  
Lynn Fripps (504 – 504)  
R C Garnett (312 – 528)  
Richard Bulpitt (504 – 504)  
Willoughby (360 – 504)

# *Elementary Projected Enrolment* *2016-2026*



## *Catchment Changes: Process To Date*

- October 20<sup>th</sup> Small Group Community meeting
  - "What is important for potential catchment changes?"
- PAC representatives indicated:
  - Desire for stability and as minimal disruptions as possible
    - Grandfather as much as possible
    - Stability for as long as possible
  - Use natural boundaries as much as possible
  - Want children to stay within Willoughby community
  - Maintain Neighbourhood Learning Centre (NLC) service providers

# ***Catchment Changes: Process To Date***

- **November - January**
  - Identified "study areas" for potential changes
  - Received Baragar forecasts and updated them with local knowledge
  - Developed 5 potential catchment plans based on the study areas
  - "Visited" the Willoughby Slope
  - Ongoing information shared with District Leadership Team, the Township of Langley and partner groups
  - Draft catchments were developed

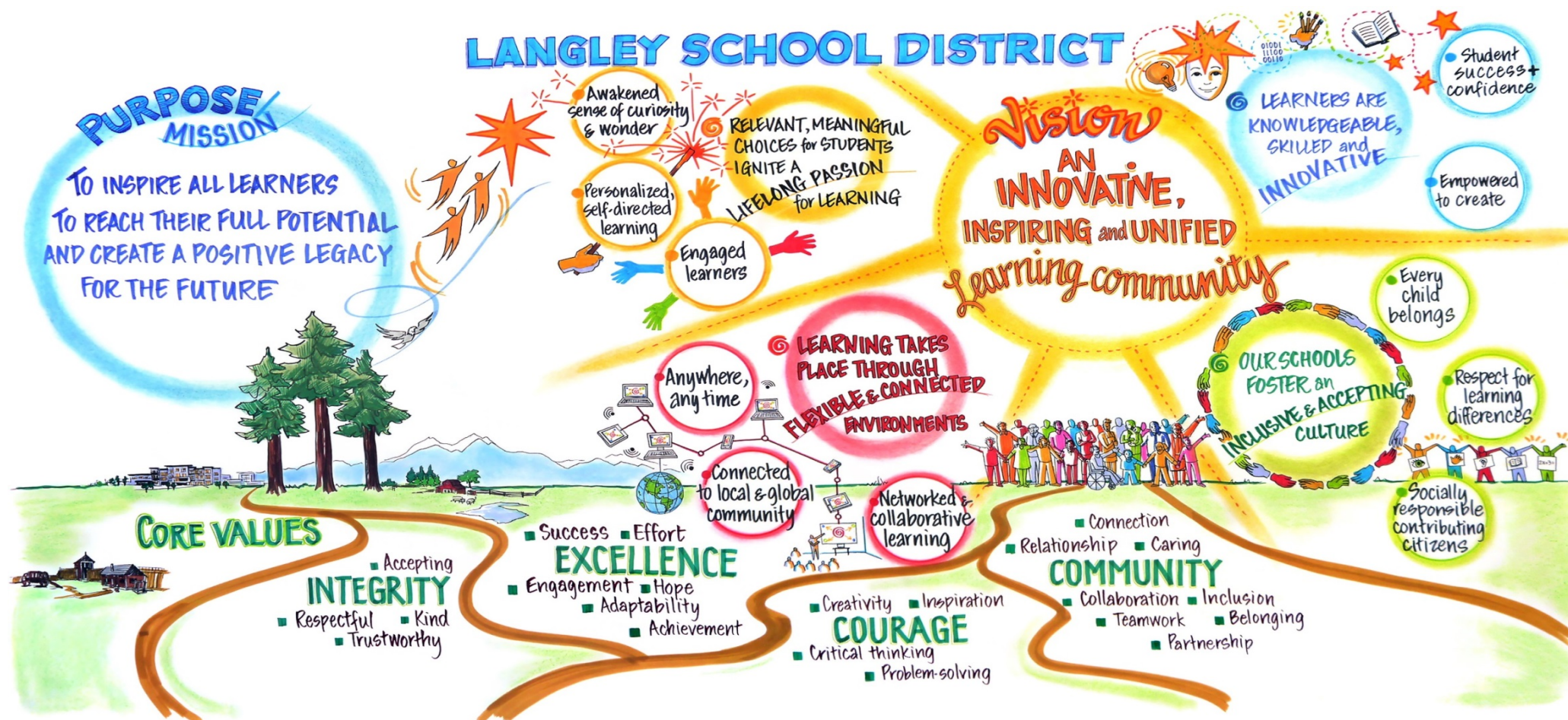


# *Going Forward*





# School District versus a District of Schools



## ***Proposals A-D***

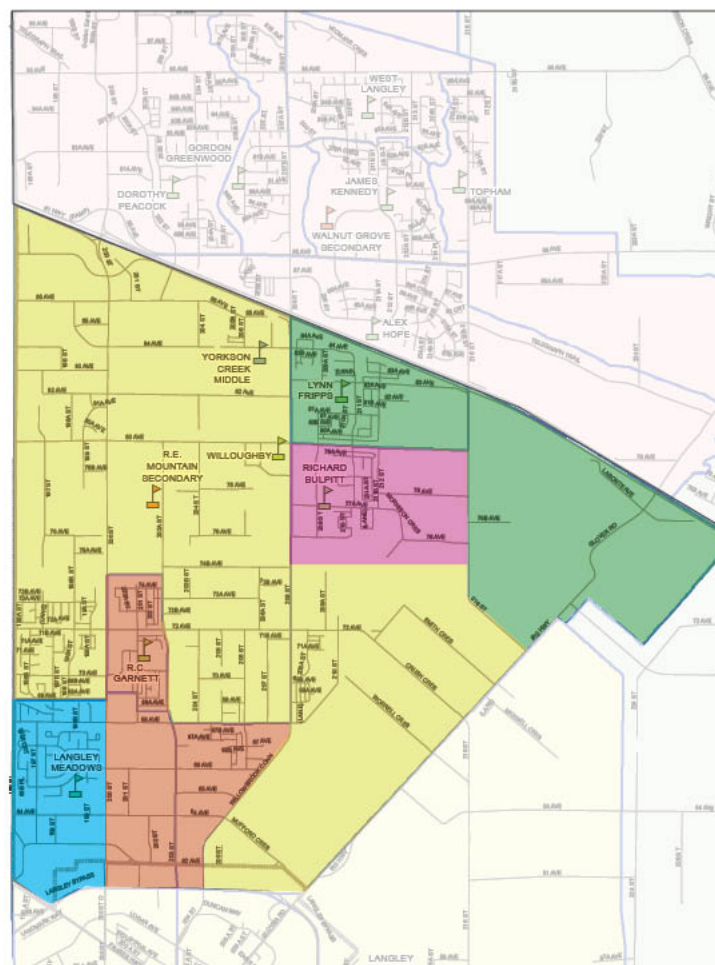
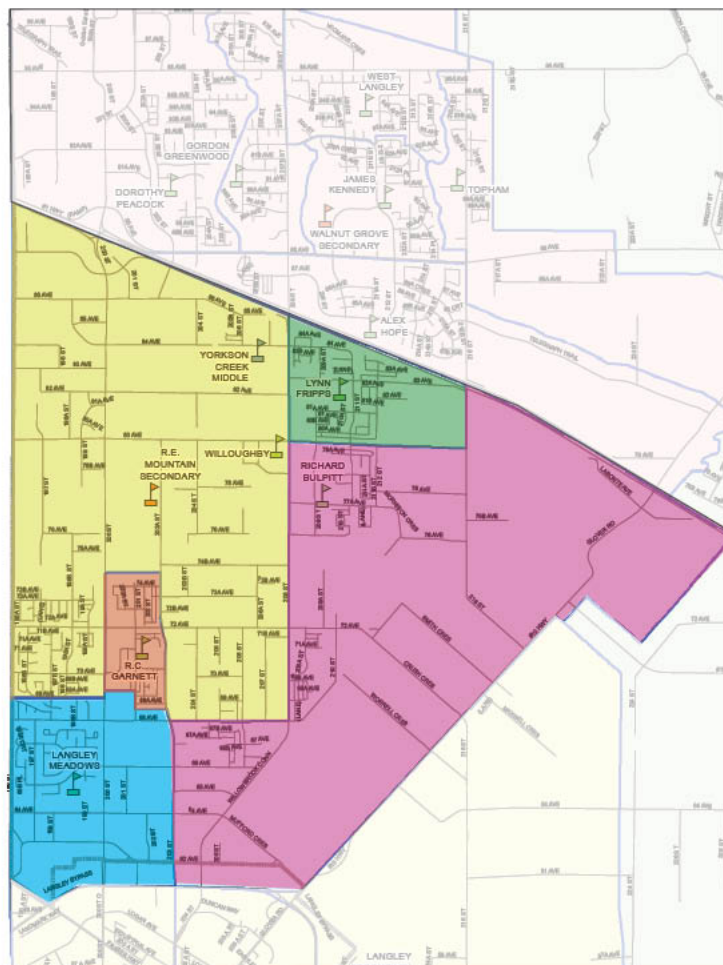
- Appendix 3 Shows
  - Other draft catchments
  - Projected enrolment
  - Considerations

# Proposal E

**Recommendation from Staff**



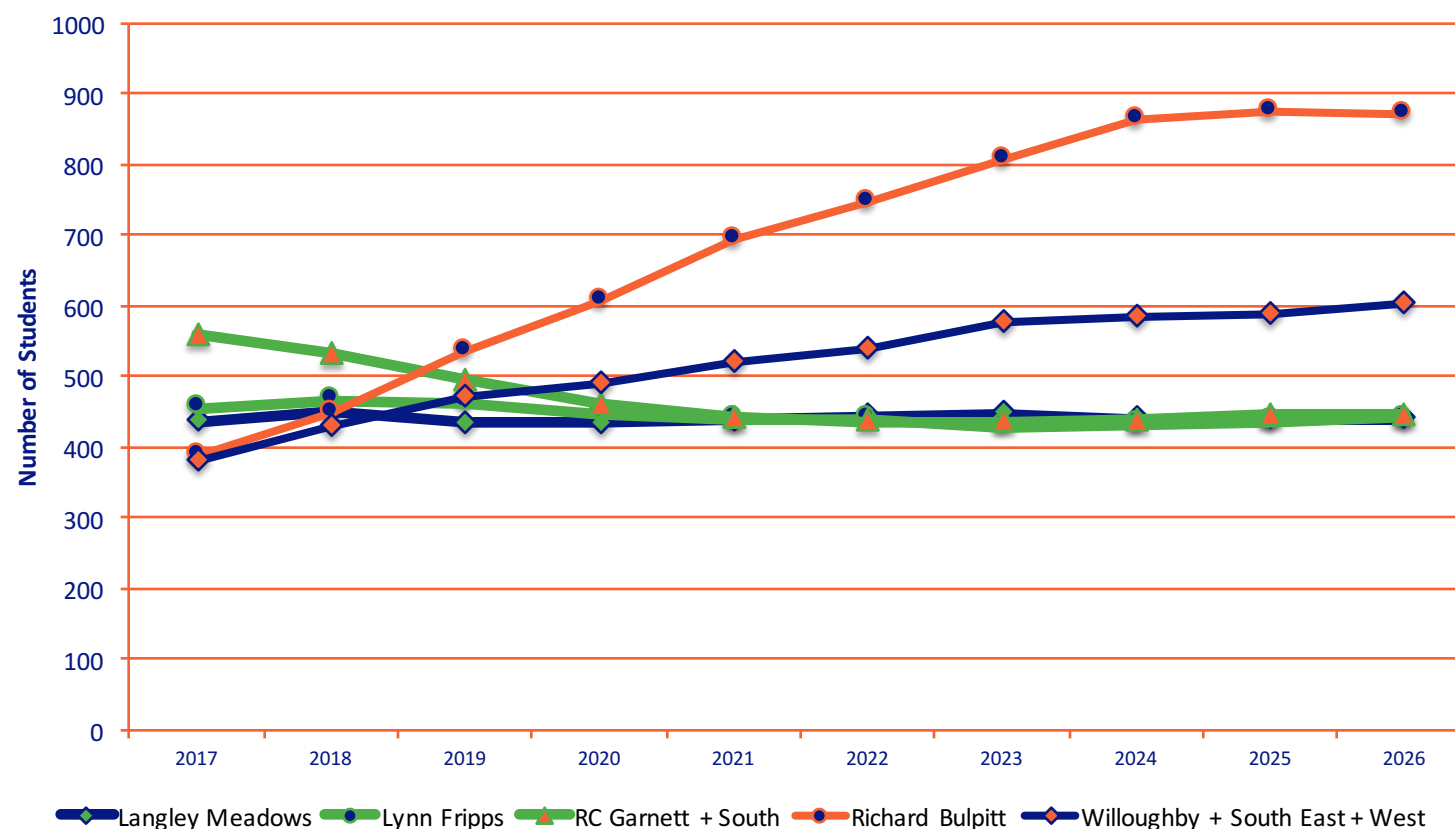
# Proposed Catchment Map



Langley Meadows (456 – 528)  
 Lynn Fripps (504 – 504)  
 R C Garnett (312 – 528)  
 Richard Bulpitt (504 – 504)  
 Willoughby (360 – 504)

# Proposed Catchment: Enrolment

Proposed Boundaries E:





## *Proposed Catchments*

- Requires the possible use of James Anderson in conjunction with RC Garnett for approximately three years
  - Staff will need to work on logistics and details
    - Potentially effective 2017 (use of James Anderson)
      - Potentially until 2020
      - James Anderson has 6 classrooms (there is room for portables on site)
    - Need to determine configuration
    - Need to determine who attends James Anderson
    - Subject to Board approval in June\*\*

## *Proposed Catchments*

- Allows Langley Meadows, Lynn Fripps, RC Garnett (including JA) to be in the mid 400's range long term
- Moves the enrolment pressure for Richard Bulpitt to 2020 or 2021 with portables
- Moves the enrolment pressure for Willoughby Elementary further into the future
- Five-Year Capital Plan reflects the need to purchase additional land for a new elementary school
- RC Garnett expansion currently in the Five-Year Capital Plan

# ***Proposed Catchment: Grandfathering***

- **Richard Bulpitt**

- Current Kindergarten and Grade 1 students (2015-16) at RBES, but living in the proposed Willoughby and RCG/James Anderson catchments would need to attend Willoughby and RCG/James Anderson Elementary in 2017
- Students in Grades 2 and 3 (2015/16 school year) can remain at RBES
  - Need to determine information on the upcoming siblings

- **Willoughby Slope**

- Students in 2017/18 in grades 4 and 5 can remain at their current schools



## *Next Steps*

- Based on the feedback from the small group meeting February 15, 2016
  - Staff will hold meetings at the elementary schools for parents and staff
    - Review draft catchments
    - Outline the other options that were considered by staff
- Consult in March and April
- Work on potential adaptations and recommendations in May
- Bring a final recommendation to the Board in June

# Communications

[feedback@sd35.bc.ca](mailto:feedback@sd35.bc.ca)



The screenshot shows a web browser window displaying the "Willoughby Slope Catchments" page on the SD35 website. The browser's address bar shows the URL <https://www.sd35.bc.ca/news-events/consultations/willoughby-slope/willoughby-slope-catchments/>. The page has a dark blue header with the Langley Schools logo and navigation links: "Our Schools", "News & Events", "Students & Parents", "Programs & Initiatives", "Our District", and "The Board". Below the header is a large green banner with the text "Willoughby Slope" and "Willoughby Slope Catchments" in white. To the right of the banner is a "Share" button. On the left side of the page is a sidebar with a "News & Events" section containing links to "Calendar", "School Calendars", "District & Board News", and "Consultations". Under "Consultations", there is a list of links: "Long-Term Facilities Plan", "Willoughby Slope", "Willoughby Slope Catchments" (highlighted with a green arrow), "LSS Review", "Lochiel U-Connect Review", "Aboriginal Enhancement Agreement", "Budget Process Consultation", and "District Calendars 2016-2019". Below these are links for "Media Releases", "School Status Alerts", and "Community Bulletin Board". The main content area features a heading "LTFP: Willoughby Slope Consultation Meeting, October 20, 2105" in green. Below this is a graphic for the "Long Term Facilities Plan Willoughby Consultation Meeting" dated Tuesday, October 20, 2015, at the School Board Office. To the right of the graphic is a paragraph of text: "At the meeting of the Board of Education June 16, 2015, the Board approved a motion that District staff begin to work with the community, schools and the Township of Langley to maintain the current configurations of the schools on the Willoughby Slope (K-5, 6-8, 9-12). In addition, the Board requested that staff begin the process, as outlined in the Willoughby Slope Spring Consultation 2015 report, of re-drawing school catchment boundaries on the Willoughby Slope for the 2017-2018 school year. Beginning the process at a small community meeting Tuesday, October 20, staff outlined the process and timeline that will be followed for the consultation process. Committee work will proceed November 2015 to January 2016 that includes drafting potential catchment boundaries and working with the Township of Langley. In February 2016 draft catchments will be presented to the Board of Education. In March and April of 2016 there will be continued community consultation on catchments with the Board approving catchments in May or June of 2016." Below the text is a breadcrumb trail: "Home > News & Events > Willoughby Slope Catchments". The footer of the page contains a "Sitemap" and "Contact" link, a "Credits" section, social media icons for Google+, Facebook, LinkedIn, Email, and Twitter, and a "Contact Directory" link. The browser's taskbar at the bottom shows various application icons and the system clock indicating 9:36 AM.

## *Summary*

- Over the next few years the School District will have to monitor and manage enrolment, capacities, facilities and catchments in order to respond to the development in this rapidly developing area.
- The District will continue to work with the Ministry, advocating for future schools but also recognizes that the growth will continue while those processes unfold.