

LANGLEY SCHOOL DISTRICT

PURPOSE MISSION

TO INSPIRE ALL LEARNERS
TO REACH THEIR FULL POTENTIAL
AND CREATE A POSITIVE LEGACY
FOR THE FUTURE

CORE VALUES

■ Accepting
INTEGRITY
■ Respectful ■ Kind
■ Trustworthy

■ Success ■ Effort
EXCELLENCE
■ Engagement ■ Hope
■ Adaptability
■ Achievement

■ Creativity ■ Inspiration
COURAGE
■ Critical thinking
■ Problem-solving

■ Connection
■ Relationship ■ Caring
COMMUNITY
■ Collaboration ■ Inclusion
■ Teamwork ■ Belonging
■ Partnership

Awakened
sense of curiosity
& wonder

Personalized,
self-directed
learning

Engaged
learners

RELEVANT, MEANINGFUL
CHOICES for STUDENTS
IGNITE A
LIFELONG PASSION
for LEARNING

Anywhere,
any time

Connected
to local & global
community

Networked &
collaborative
learning

LEARNING TAKES
PLACE THROUGH
FLEXIBLE & CONNECTED
ENVIRONMENTS

Vision
AN
INNOVATIVE,
INSPIRING and UNIFIED
Learning community

LEARNERS ARE
KNOWLEDGEABLE,
SKILLED and
INNOVATIVE

Student
success +
confidence

Empowered
to create

OUR SCHOOLS
FOSTER an
INCLUSIVE & ACCEPTING
CULTURE

Every
child
belongs

Respect for
learning
differences

Socially
responsible
contributing
citizens

LONG TERM FACILITIES PLAN

TRANSITION TO MIDDLE SCHOOL PROGRAMMING IN THE FUNDAMENTAL COMMUNITY

COMMUNITY MEETING NO. 1



Thursday, January 26, 2017
Coghlan Fundamental Elementary School

WELCOME AND INTRODUCTIONS



OVERVIEW OF THE MEETING

- Traditional Welcome and Introductions
- Process
- Consultation Timeline
- Initial Community Themes and Questions – DW Poppy/Coghlan
- Guiding Principles
- Long Term Facilities Plan
- Enrolment Projections and Capacity Utilization
- Facility Seismic Conditions
- Transportation
- Communications
- Break-out Sessions

INTRODUCTIONS

District Leadership Team

Gord Stewart

A/Superintendent of Schools

David Green

Secretary-Treasurer

Woody Bradford

Assistant Superintendent

Claire Guy

Assistant Superintendent

Mal Gill

Assistant Superintendent

Human Resources

Board of Education

Rob McFarlane, Chair

Megan Dykeman, Vice-Chair

Shelley Coburn, Trustee

Alison McVeigh, Trustee

Rod Ross, Trustee

David Tod, Trustee

Rosemary Wallace, Trustee

INTRODUCTIONS

School Administrators

Sean Wicker, Principal
Langley Fundamental Middle/Secondary

Carla Clapton, Vice-Principal
Langley Fundamental Middle/Secondary

Cathy Gracie, Principal
Coghlan Fundamental Elementary

Deah Paton, Principal
Langley Fundamental Elementary

Kendra Simonetto, Vice-Principal
Langley Fundamental Elementary

District Staff

Brian Iseli
Assistant Secretary-Treasurer

Sam Muraca, District Principal
Educational Planning

Tristan Schaufler, Director
Facilities, Capital Projects and Transportation

Ken Hoff, Communications Manager

PROCESS

To DATE

- **Middle school implementation in Langley Secondary, Aldergrove Secondary and Willoughby Slope communities**

- **Board of Education Motions**

“That the Board of Education supports the establishment of a District-wide middle school model as part of the Long Term Facilities Plan.”

“That the Board of Education approves that staff undertakes a consultation with the Brookwood, DW Poppy and Walnut Grove communities regarding the transition to a middle school model upon completion of the informational community meetings.”

- **Long Term Facilities Plan Recommendation**

It is recommended that School District No. 35 (Langley):

“Commences a stakeholder consultation process to discuss middle grades education with a potential follow-up process on middle grades configuration for the Brookwood, D.W. Poppy, and Walnut Grove areas.”

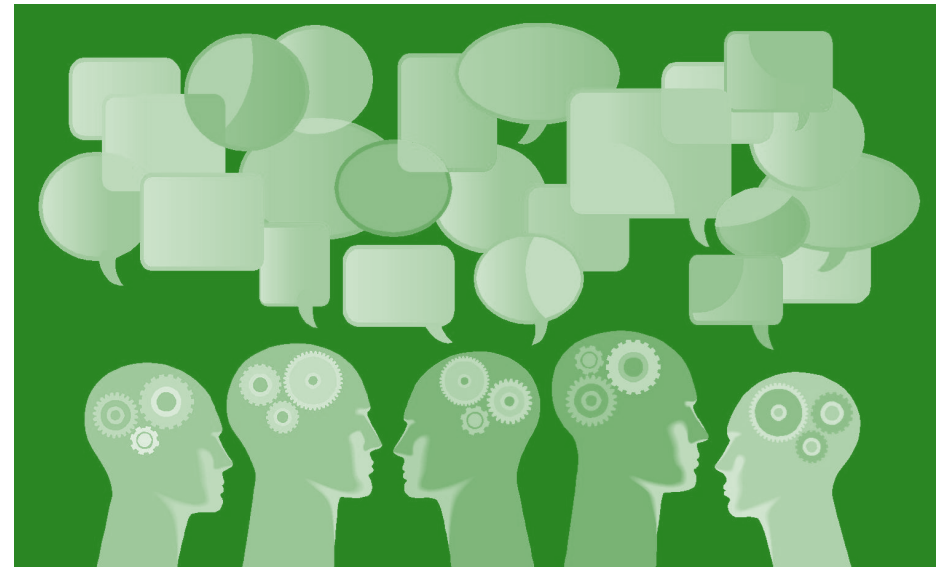
A FOCUS ON STUDENTS

- Caring for the social – emotional well-being of children
- Being mindful of the physical well-being of children
- Providing vibrant and sustainable learning opportunities for all children



PREVIOUS COMMUNITY CONSULTATIONS

- Balanced Calendar
- LSS Seismic Project
- Willoughby Middle/Secondary
- RC Garnett Expansion
- Willoughby Catchment Changes



INITIAL COMMUNITY THEMES AND QUESTIONS – DW POPPY/COGHLAN

Themes emerging from first DW Poppy community meeting (January 11, 2017):

- Community would like options.
- Possible school closure?
- Impact on BCIT program at DW Poppy Secondary?
- Questions around feasibility of 6 to 12 at DW Poppy Secondary.
- Bussing implications of options?
- Funds for conversion?
- Benefits of K to 5?

From Coghlan families:

- Alignment with DW Poppy?
- District timeline for implementation?
- Provision of bussing?

CONSULTATION TIMELINE



TIMELINE: NOVEMBER 2016 – MAY 2017

- **Small Group Meeting to discuss proposed consultation plan/timeline**
 - Administrators and PAC representatives: November 23, 2016
- **Three community meetings planned for each area of the District**
 - Brookwood: January 17, February 22 and April 26, 2017
 - DW Poppy: January 11, February 9 and April 19, 2017
 - Fundamental: January 26, March 2 and May 8, 2017
 - Walnut Grove: January 31, February 27 and May 2, 2017
- **Small Group Meeting to review feedback from all communities and discuss potential options/timeline for moving forward**
 - Administrators and PAC representatives: April 5, 2017
- **Final report to the Board of Education Regular Meeting on May 30, 2017**

Note: No changes to current configurations will take effect during the 2017-18 school year.

GUIDING PRINCIPLES



OUR CORE VALUES



Integrity

Excellence

Courage

Community

GUIDING PRINCIPLES FOR AN EFFECTIVE COMMUNITY CONSULTATION

1. That the consultation process be one of integrity where honesty and transparency are of utmost importance.
2. That trust between communities and the District be developed and maintained throughout the process.
3. That the District listen to communities and sincerely reflect on feedback and ideas.
4. That the District value and honour community members and treat them with respect.

LONG TERM FACILITIES PLAN



LONG TERM FACILITIES PLAN (LTFP)

- Required by the Ministry to demonstrate proper facility planning
- Supports the District's educational plans over a 10 year window
- Becomes the basis for submission of capital project requests by the district and investment decision by the Ministry
- Current plan was adopted in 2012
- Formal revision of a LTFP required by the Ministry of Education when a significant change has taken place

Examples of a Significant Change

- Any significant changes in the educational programs, either initiated by the district or the government
- Proposed reconfiguration of schools
- A change in the availability status of any facility used for K-12 education
- Enrollment projections that exceed 10% (increase or decrease) over the 10 year window
- Other events that potentially affect investment decisions in the district's facilities

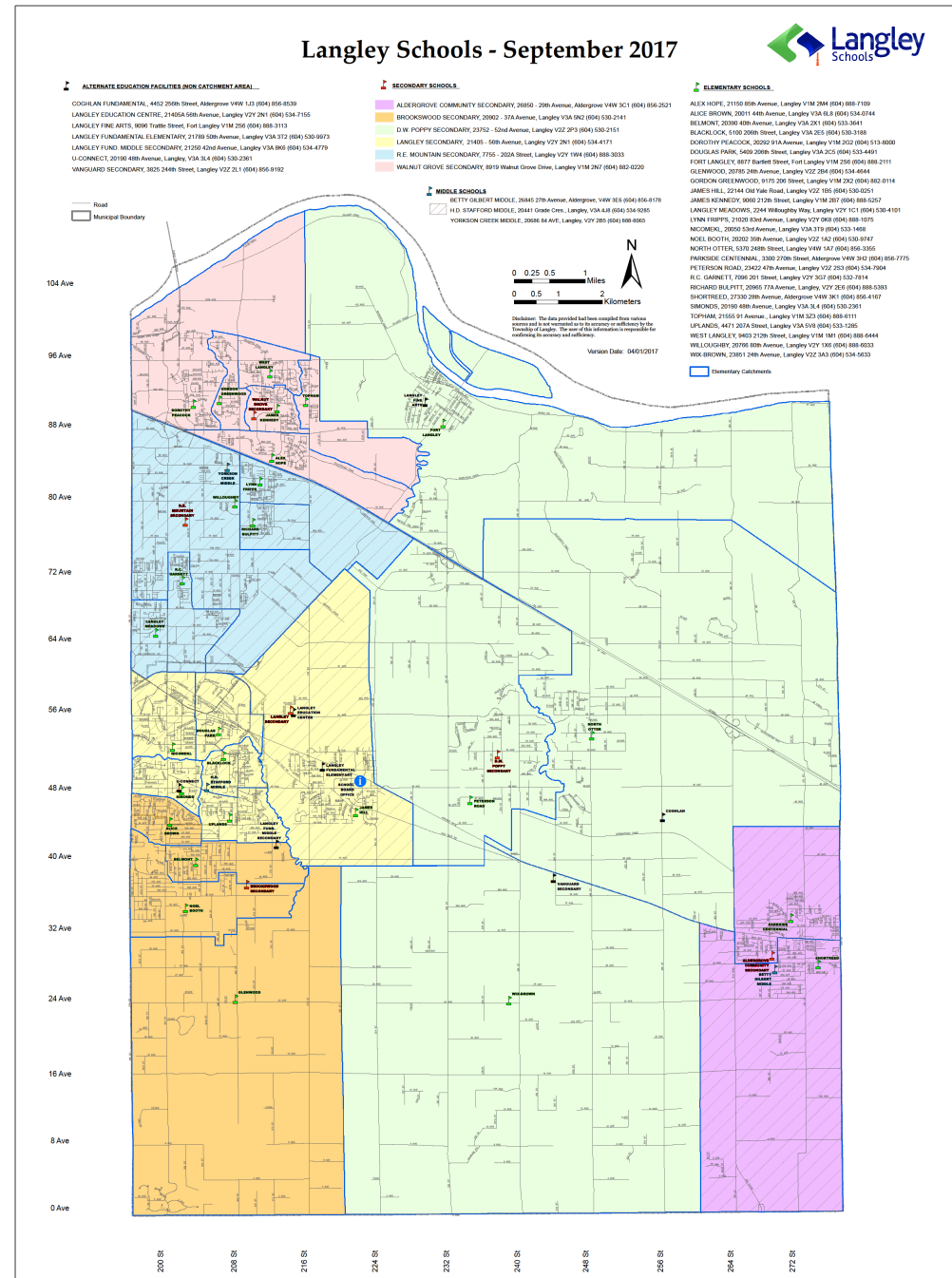
OTHER DISTRICT CONSIDERATIONS

1. Enrolment projections
2. Capacity issues at some schools
3. Seismic conditions of schools
4. Transportation

ENROLMENT AND CAPACITY UTILIZATION

DISTRICT CATCHMENTS

LTFP Transition to Middle School Programming
Fundamental Community Meeting – January 26, 2017



FUNDAMENTAL FAMILY OF SCHOOLS

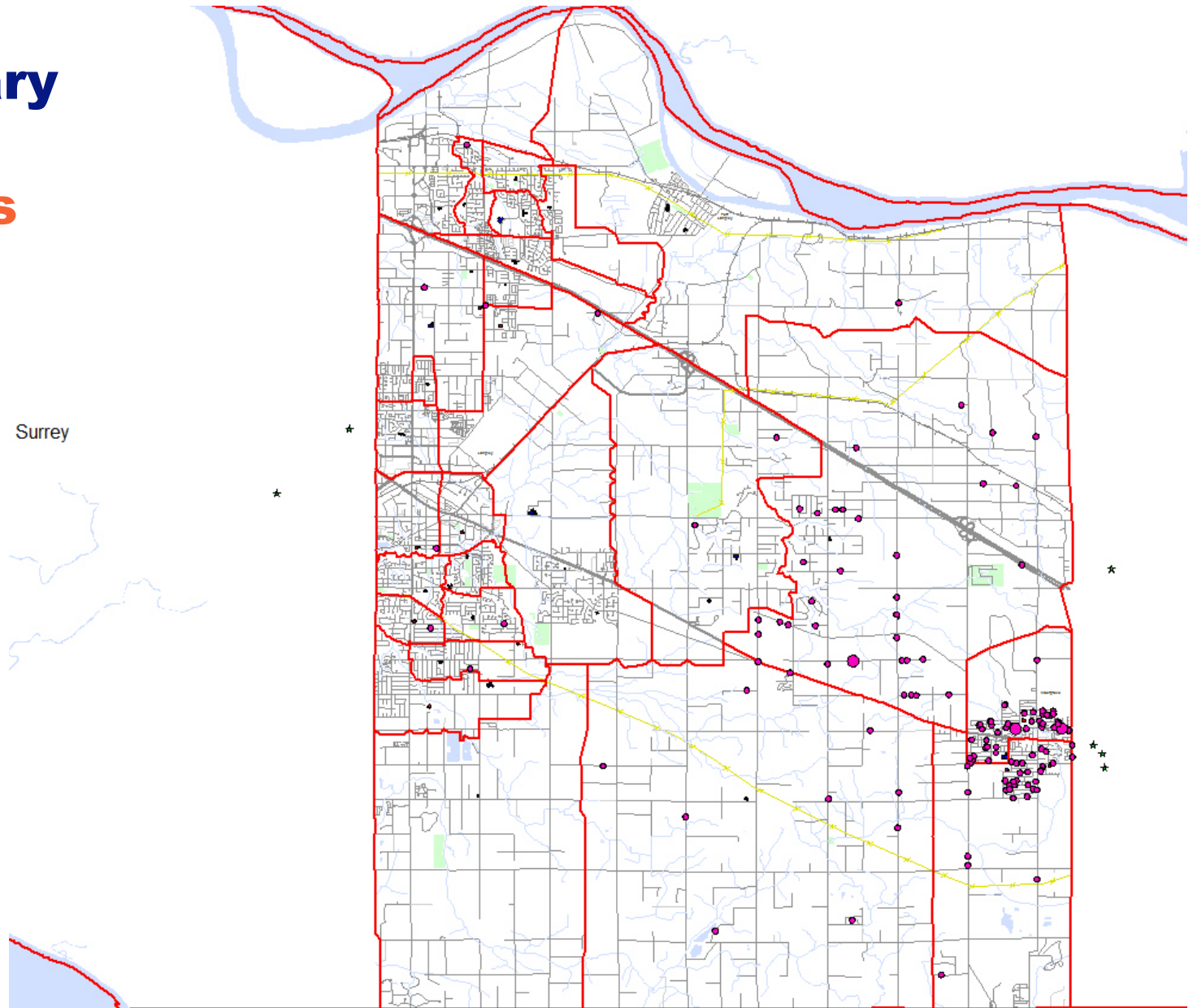
Student numbers as at 30 September 2016 (K-12)

Where do students come from?

	Coghlan Fundamental Elementary	Langley Fundamental Elementary	Langley Fundamental Middle/Secondary
Aldergrove Family of Schools	136	17	41
Brookwood Family of Schools	3	55	150
DW Poppy Family of Schools	67	63	113
Langley Secondary Family of Schools	4	242	344
RE Mountain Family of Schools	6	102	109
Walnut Grove Family of Schools	0	27	34
Out of District	14	14	39
Total	230	520	830

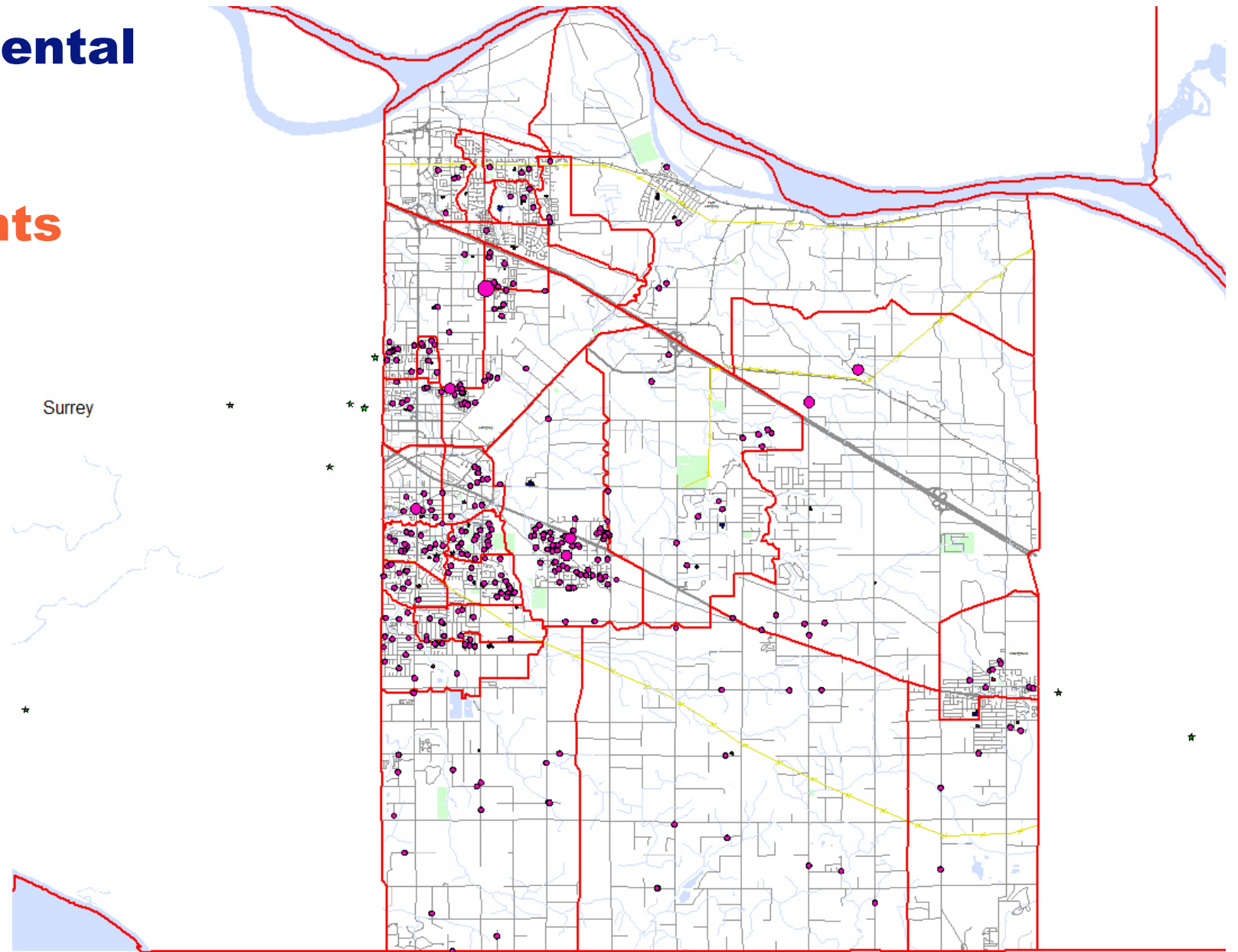
Coghlan Elementary

Where do students
come from?



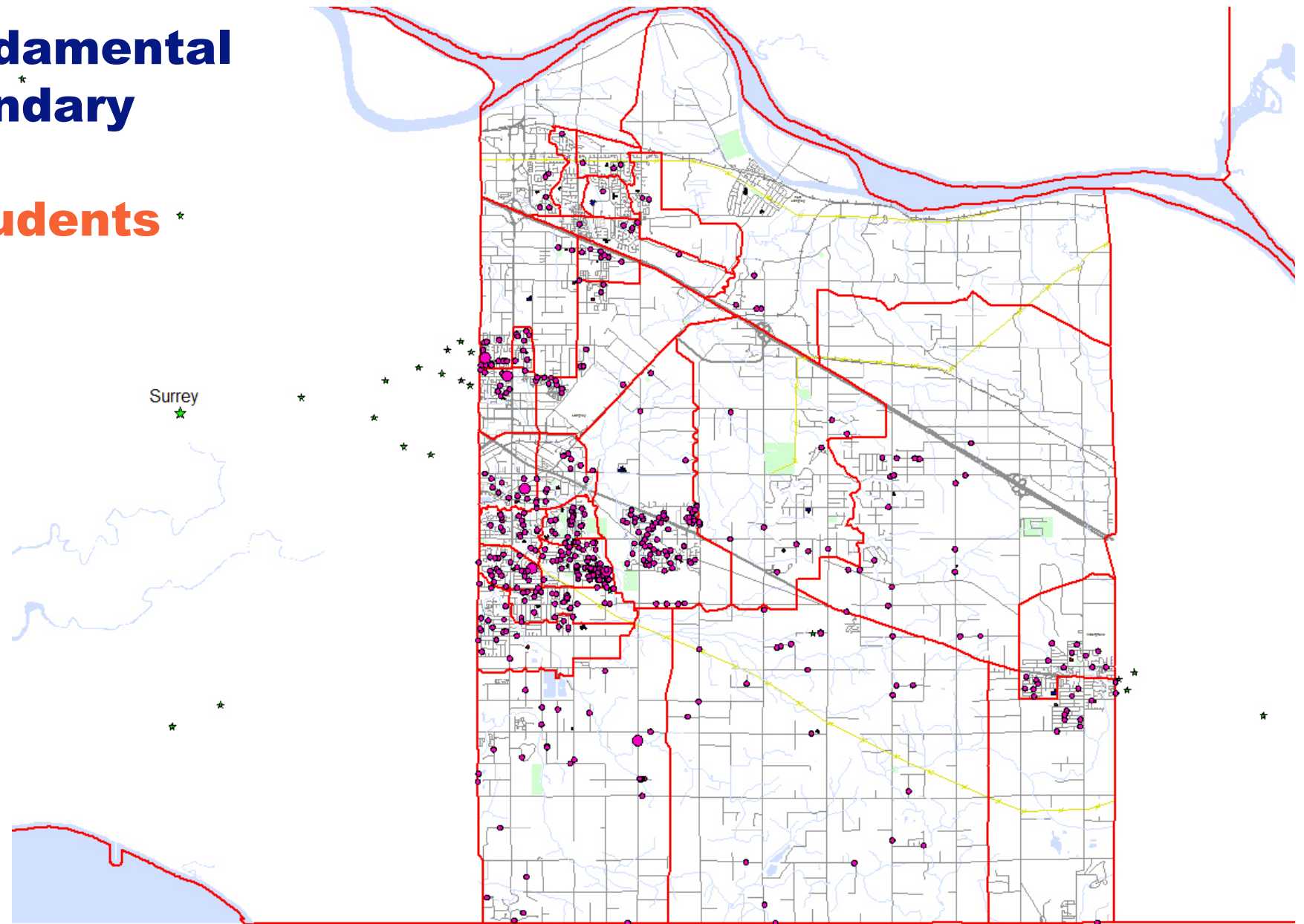
Langley Fundamental Elementary

Where do students come from?



Langley Fundamental Middle/Secondary

Where do students
come from?



FUNDAMENTAL FAMILY OF SCHOOLS

Student numbers as at 30 September 2016 (K-7)

Capacity and Enrolment

	Enrolment	Capacity	Capacity Utilization
Coghlan Fundamental Elementary	230	235	98%
Langley Fundamental Elementary	520	557	93%
Langley Fundamental Middle/Secondary	830	825	101%

FACILITY SEISMIC CONDITIONS



MINISTRY SEISMIC ASSESSMENT CATEGORIES

Rating	Description
High 1 (H1)	Most vulnerable structure; at highest risk of widespread damage or structural failure; not reparable after event.
High 2 (H2)	Vulnerable structure; at high risk of widespread damage or structural failure; likely not reparable after event.
High 3 (H3)	Isolated failure of building elements such as walls are expected; building likely not reparable after event.
Medium (M)	Isolated damage to building elements is expected; non-structural elements (such as bookshelves, lighting) are at risk of failure.
Low (L)	Least vulnerable; would experience isolated damage; probably reparable after event.

FUNDAMENTAL FAMILY OF SCHOOLS

School	Status
Coghlan Fundamental Elementary	Two Medium blocks and 1 Low block
Langley Fundamental Elementary	One High 2 block and 3 Medium blocks
Langley Fundamental Middle/Secondary	Three Low blocks

COGHLAN FUNDAMENTAL ELEMENTARY

Block #	Block Name	Area (m2)	Risk	Status
1	1958 1-storey Classroom	600	Medium	Non Structural Upgrade Required
2	Gymnasium	260	Medium	Non Structural Upgrade Required
3	1994 1-storey Classroom	500	Low	Meets Structural Life Safety Requirements

LANGLEY FUNDAMENTAL ELEMENTARY

Block #	Block Name	Area (m2)	Risk	Status
1	1981 Gymnasium	420	High 2	Structural Upgrade Required
2	1981 Classroom/ Admin Block	1,210	Medium	Non Structural Upgrade Required
3	1984 1-Storey Classroom	576	Medium	Non Structural Upgrade Required
4	1991 Classroom Addition	875	Medium	Non Structural Upgrade Required

LANGLEY FUNDAMENTAL MIDDLE/SECONDARY

Block #	Block Name	Area (m2)	Risk	Status
1	1992 Block 1	3,100	Low	Meets Structural Life Safety Requirements
2	1992 Block 2	830	Low	Meets Structural Life Safety Requirements
3	2000 Block 3	560	Low	Meets Structural Life Safety Requirements

TRANSPORTATION



COMMUNICATIONS



COMMUNICATIONS

- Website:
www.sd35.bc.ca/consultations



- Hash tag:
#SD35LTFP
- Feedback email:
feedback@sd35.bc.ca
- Newspaper Ads

BREAK-OUT SESSIONS



SMALL GROUP CONVERSATIONS

Brainstorm thoughts and ideas that are important considerations from your school's perspective

1. What questions do you have pertaining to the information that was provided this evening?
2. What additional information can we provide?
3. What are the essential things that must be in place for this transition to a middle school model to be successful?